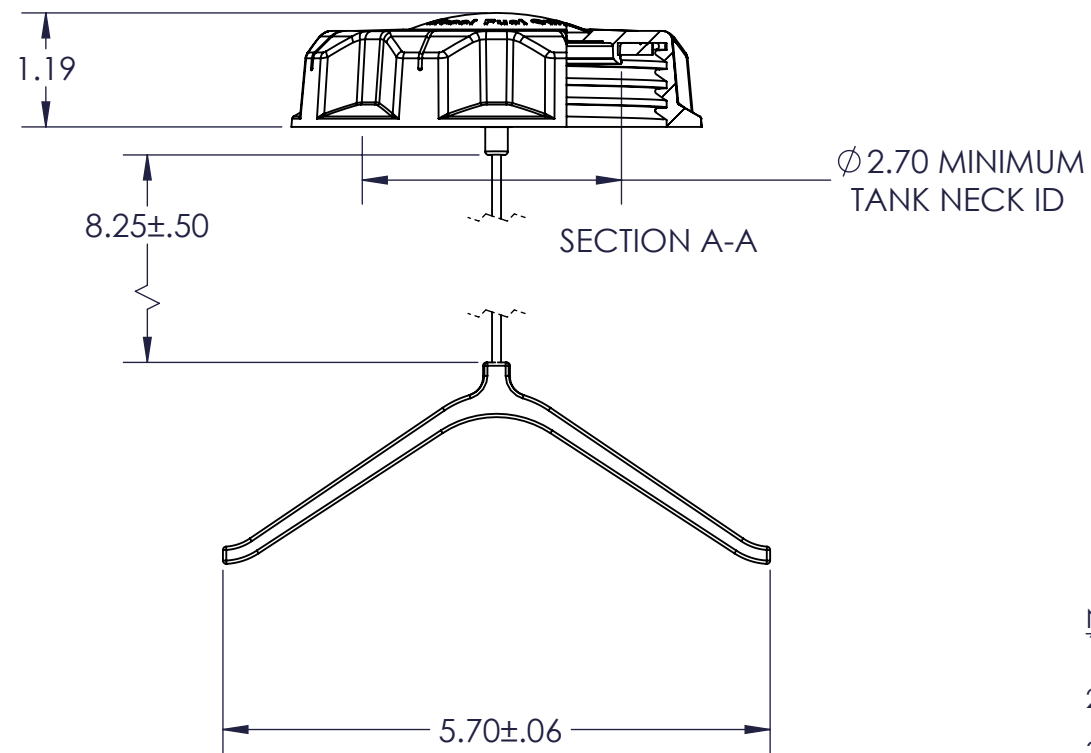
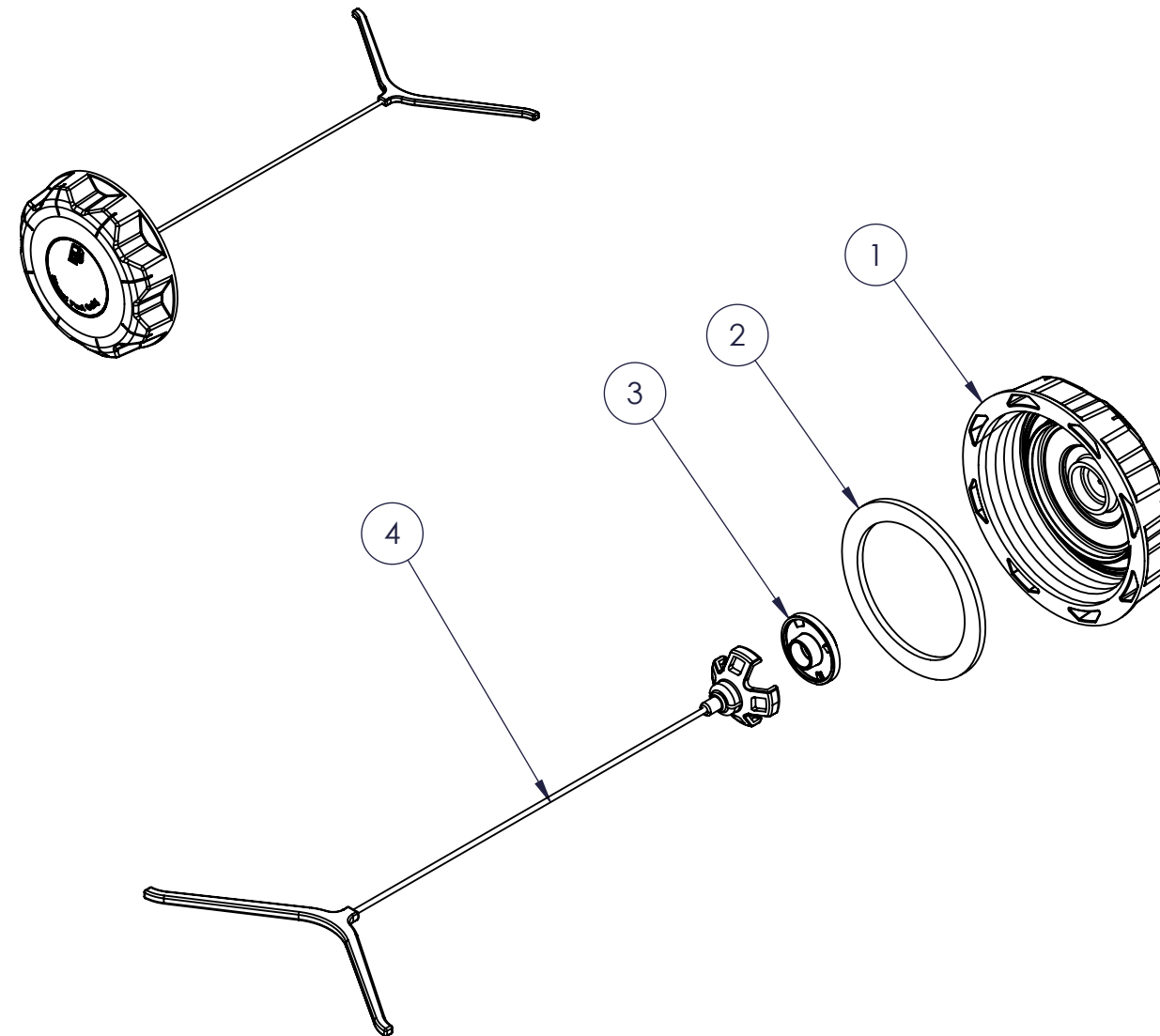
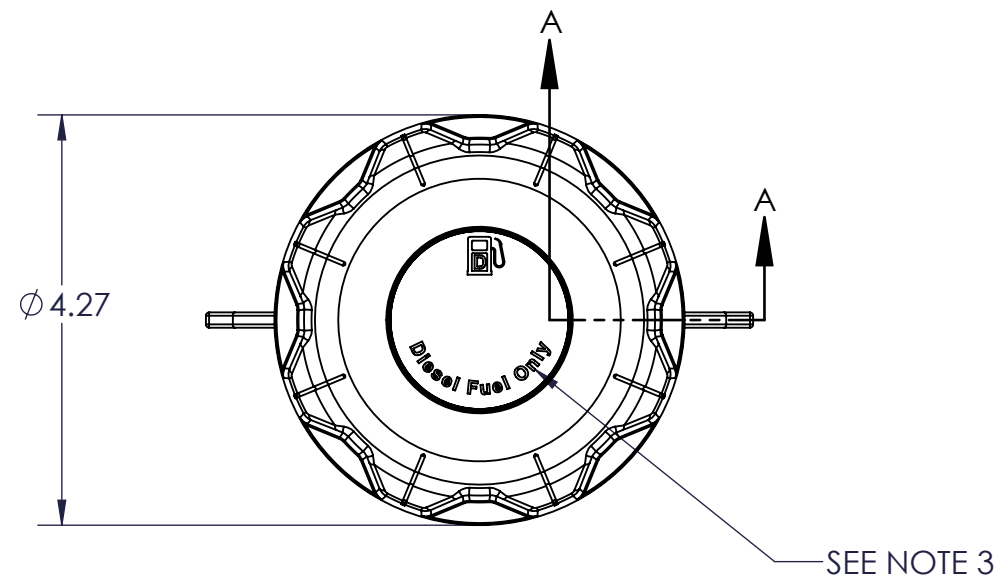


REVISIONS					
REV	ECR	DESCRIPTION	DATE	BY	APR
A	NPN	RELEASED FOR PRODUCTION	5-15-13	ANA	PSB



- NOTES:
1. CAP THREAD IS MODIFIED BUTTRESS THREAD 3.50" - 5 TPI
  2. SEE DWG S-10283 FOR MATING THREAD SPECIFICATIONS.
  3. GRAPHIC IS PRINTED BLACK DFO. REFERENCE DWG S-10032 FOR DETAILS.
  4. TESTING AND VERIFICATION THAT THIS PRODUCT IS APPROPRIATE FOR THE APPLICATION FOR WHICH IT IS INTENDED IS THE SOLE RESPONSIBILITY OF THE PURCHASING PARTY.

ITEM	FPN	DWG #	DESCRIPTION	QTY.
4	468776	S-10369	TETHER	1
3	912497B	S-10011	RETAINER	1
2	468717B	B9370	GASKET	1
1	961168A	S-10037	CAP	1

**PROPRIETARY AND CONFIDENTIAL**  
 THE INFORMATION CONTAINED IN THIS DRAWING IS THE SOLE PROPERTY OF FLAMBEAU, INC. ANY REPRODUCTION IN PART OR AS A WHOLE WITHOUT THE WRITTEN PERMISSION OF FLAMBEAU, INC. IS PROHIBITED.

**DIMENSIONS ARE IN INCHES.**  
 THE FOLLOWING TOLERANCES APPLY UNLESS OTHERWISE SPECIFIED  
 ANGULAR: ±3°  
 TWO PLACE x.xx ±.01"  
 THREE PLACE x.xxx ±.005"  
 DIMENSIONS IN PARENTHESIS ( ) ARE FOR REFERENCE ONLY.

SHT 1	<b>FLAMBEAU, INC.</b>		
			SCALE: 1:2
OF 1	MOLD NO: 4703	MAT'L: NA	FPN: 080192AE
	DESCRIPTION: 3.50" UNVENTED DFO PRINTED CAP - GREEN		
CUSTOMER: FLAMBEAU FLUID SYSTEMS			DWG NO: 080192